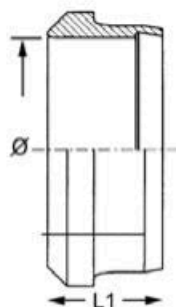


SNIJRING Ø 6 MM L

Model: 1000-06L



Omschrijving



1000

~~**2000**~~

3000

DPR

DIN 3861

**Snijring
Bague coupante
Cutting ring**

| DIN 2353 | Ø | PN BAR | | | L1 | REF. | | |
|----------|----|--------|-------|-------|------|-----------|----------------------|------------|
| | | Fe | Cu/Zn | 316Ti | | Fe/Zn | Cu/Zn | AISI 316Ti |
| LL | 4 | | | | 6 | 1000-04LL | 2000-04LL | 3000-04LL |
| | 6 | | | | 7 | 1000-06LL | | 3000-06LL |
| | 8 | | | | 7 | 1000-08LL | | 3000-08LL |
| L | 6 | | | | 9,5 | 1000-06L | 2000-06L | 3000-06L |
| | 8 | | | | 9,5 | 1000-08L | 2000-08L | 3000-08L |
| | 10 | | | | 10 | 1000-10L | 2000-10L | 3000-10L |
| | 12 | | | | 10 | 1000-12L | 2000-12L | 3000-12L |
| | 15 | | | | 10 | 1000-15L | 2000-15L | 3000-15L |
| | 18 | | | | 10 | 1000-18L | 2000-18L | 3000-18L |
| | 22 | | | | 10,5 | 1000-22L | 2000-22L | 3000-22L |
| | 28 | | | | 10,5 | 1000-28L | 2000-28L | 3000-28L |
| | 35 | | | | 13 | 1000-35L | 2000-35L | 3000-35L |
| | 42 | | | | 13,5 | 1000-42L | 2000-42L | 3000-42L |
| S | 6 | | | | 9,5 | 1000-06L | 2000-06L | 3000-06L |
| | 8 | | | | 9,5 | 1000-08L | 2000-08L | 3000-08L |
| | 10 | | | | 10 | 1000-10L | 2000-10L | 3000-10L |
| | 12 | | | | 10 | 1000-12L | 2000-12L | 3000-12L |
| | 14 | | | | 10 | 1000-14S | 2000-14S | 3000-14S |
| | 16 | | | | 10,5 | 1000-16S | 2000-16S | 3000-16S |
| | 20 | | | | 12,5 | 1000-20S | 2000-20S | 3000-20S |
| | 25 | | | | 12,5 | 1000-25S | 2000-25S | 3000-25S |
| | 30 | | | | 13 | 1000-30S | 2000-30S | 3000-30S |
| | 38 | | | | 13,5 | 1000-38S | 2000-38S | 3000-38S |

Smeertechniek Rotterdam

Cairostraat 74
3047 BC Rotterdam

T 010 - 466 62 55

F 010 - 466 66 55

E info@smeertechniek.nl

W www.smeertechniek.nl

Scan de QR code om
dit product te bestellen



Smeertechniek Rotterdam

Cairostraat 74
3047 BC Rotterdam

T 010 - 466 62 55

F 010 - 466 66 55

E info@smeertechniek.nl

W www.smeertechniek.nl

Scan de QR code om
dit product te bestellen

